

CONTINENTAL

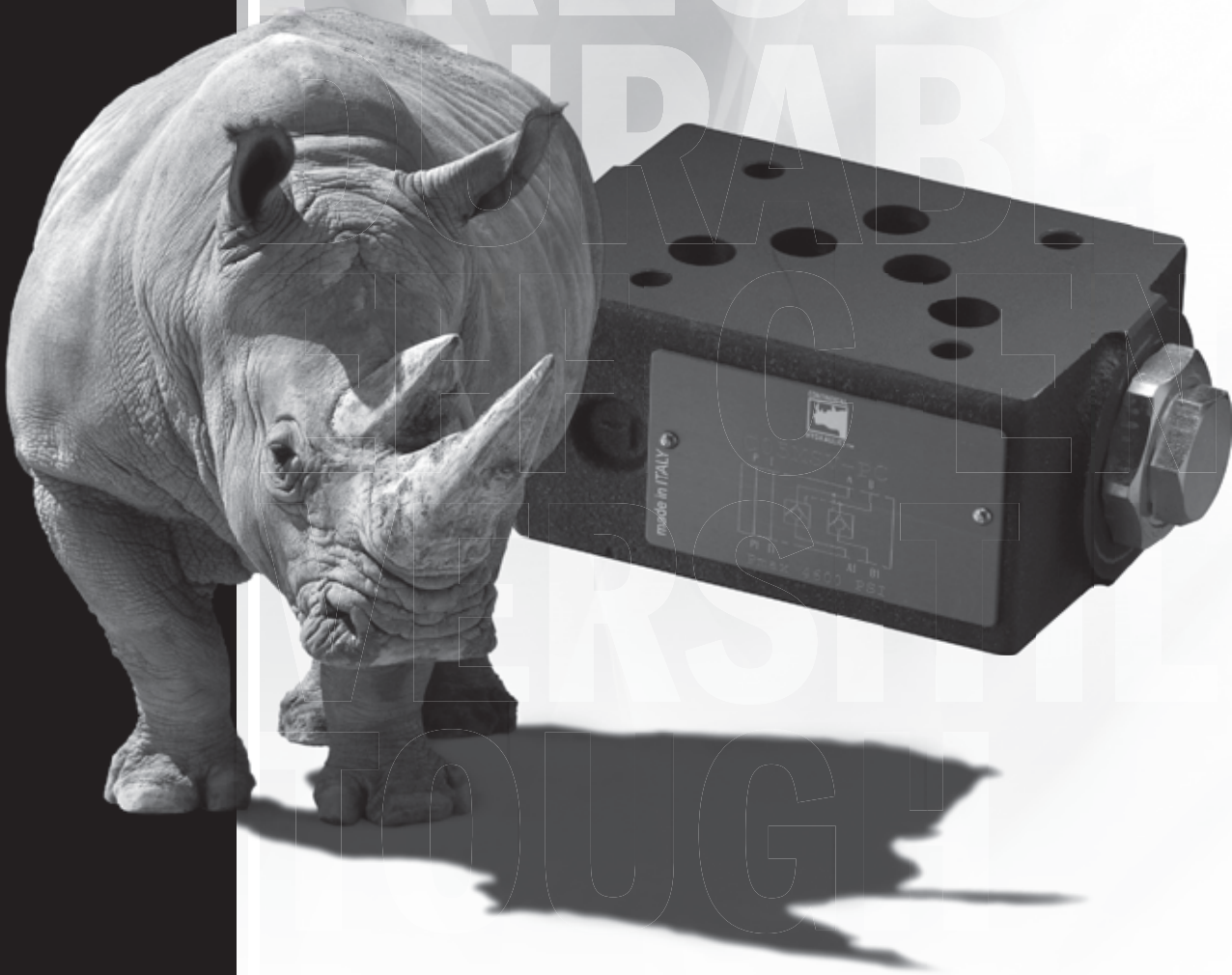


HYDRAULICS™

CONTINENTAL HYDRAULICS

C05MSV-P*

PILOT OPERATED CHECK VALVE



C05MSV-P* - PILOT OPERATED CHECK VALVE

ACCURATE

C05MSV-P* PILOT OPERATED CHECK VALVE



DESCRIPTION

This valve utilizes a guided spool and poppet-seat check valves as a blocking or load-holding device for high pressure applications.

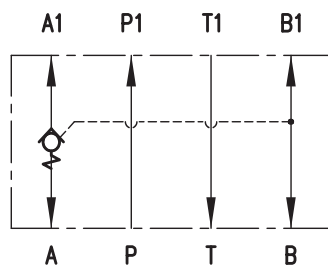
OPERATIONS

This valve allows free flow from the directional control valve work port to the load and blocks flow in the opposite direction. Flow is allowed from the load to the directional control valve work port when 40% of the load induced pressure is sensed in the opposing directional control valve work port.

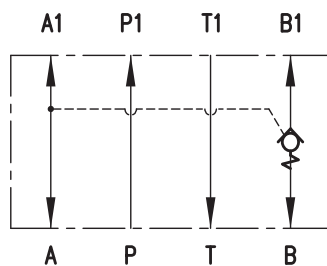
TYPICAL PERFORMANCE SPECIFICATIONS

| | | |
|-----------------------------------|---------------------------------|------------------|
| MAXIMUM OPERATING PRESSURE | 5000 psi | 350 bar |
| CRACKING PRESSURE | 30 psi | 2 bar |
| MAXIMUM FLOW RATE | 32 gpm | 120 l/min |
| PILOT RATIO | 2.3 : 1 | |
| DECOMPRESSION RATIO | 14.9 : 1 | |
| MOUNTING SURFACE | NFPA D05 ISO 4401-05-04-0-05 | |
| WEIGHT | C05MSV-PC | 4.9 lbs / 2.2 kg |
| | C05MSV-PA -PB | 4.2 lbs / 1.9 kg |

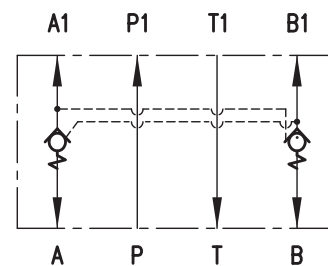
AVAILABLE VERSIONS



C05MSV-PA



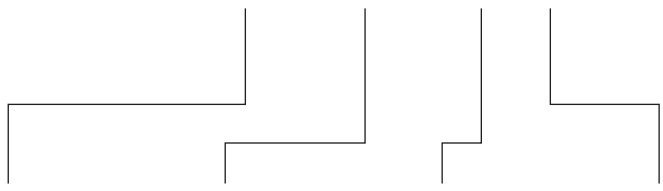
C05MSV-PB



C05MSV-PC

IDENTIFICATION CODE

C05MSV-P - **30** - **C** - _____ DESIGN LETTER



| CONTROL PORT | |
|--------------|--------------|
| A | Port A |
| B | Port B |
| C | Port A and B |

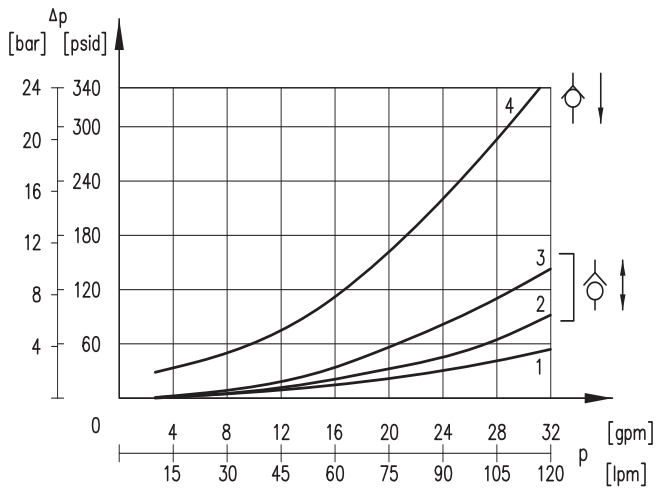
| CRACKING PRESSURE | |
|-------------------|--------|
| 30 | 30 psi |

| SEAL | |
|----------|------------|
| A | Buna (STD) |
| G | Viton |

| BODY MATERIAL | |
|---------------|-----------|
| C | Cast Iron |

TYPICAL ORDERING CODE:
C05MSV-PA-30-AC-C

PERFORMANCE CURVE

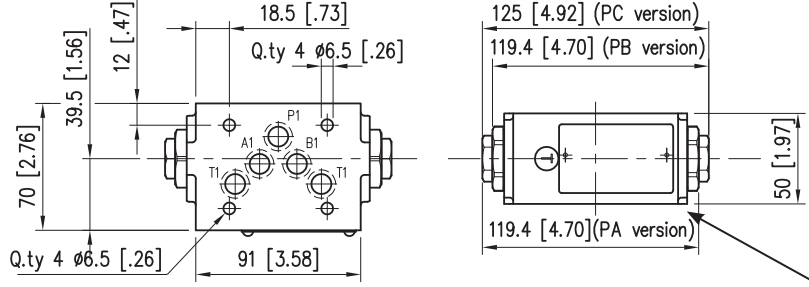


| VALVE | FLOW CURVE NUMBER | | | | | |
|------------------|-------------------|------|------|------|------|------|
| | A1→A | B1→B | P→P1 | T→T1 | A→A1 | B→B1 |
| C05MSV-PA | 4 | 4 | 1 | 1 | 2 | - |
| C05MSV-PB | 4 | 4 | 1 | 1 | - | 2 |
| C05MSV-PC | 4 | 4 | 1 | 1 | 3 | 3 |

NOTE:
Values obtained with oil viscosity of 170 SUS (36 cSt) at 122°F (50°C).

DIMENSIONS

Dimensions in mm [IN]



Mounting surface with sealing rings: 5 O-Ring type AS568-014 - 90 shore A

SEAL KIT

| | |
|-----------------------|---------|
| BUNA SEAL KIT | 1013665 |
| VITON SEAL KIT | 1013666 |

POWERFUL
CURATE
VATIVE
PRECISE
URABLE
EFFICIENT
PERCUTILE

ABOUT CONTINENTAL HYDRAULICS

Rugged, durable, high-performance, efficient—the reason Continental Hydraulics' products are used in some of the most challenging applications across the globe. With a commitment to quality customer support and innovative engineering, Continental's pumps, valves, power units, mobile and custom products deliver what the markets demand. Continental has been serving the food production, brick and block, wood products, automotive and machine tool industries since 1962. Learn how our products survive some of the most harsh environments.

SALES@CONTHYD.COM

4895 12th Avenue East, Shakopee, MN 55379 / continentalhydraulics.com / 952-895-6400

CONTINENTAL



HYDRAULICS.